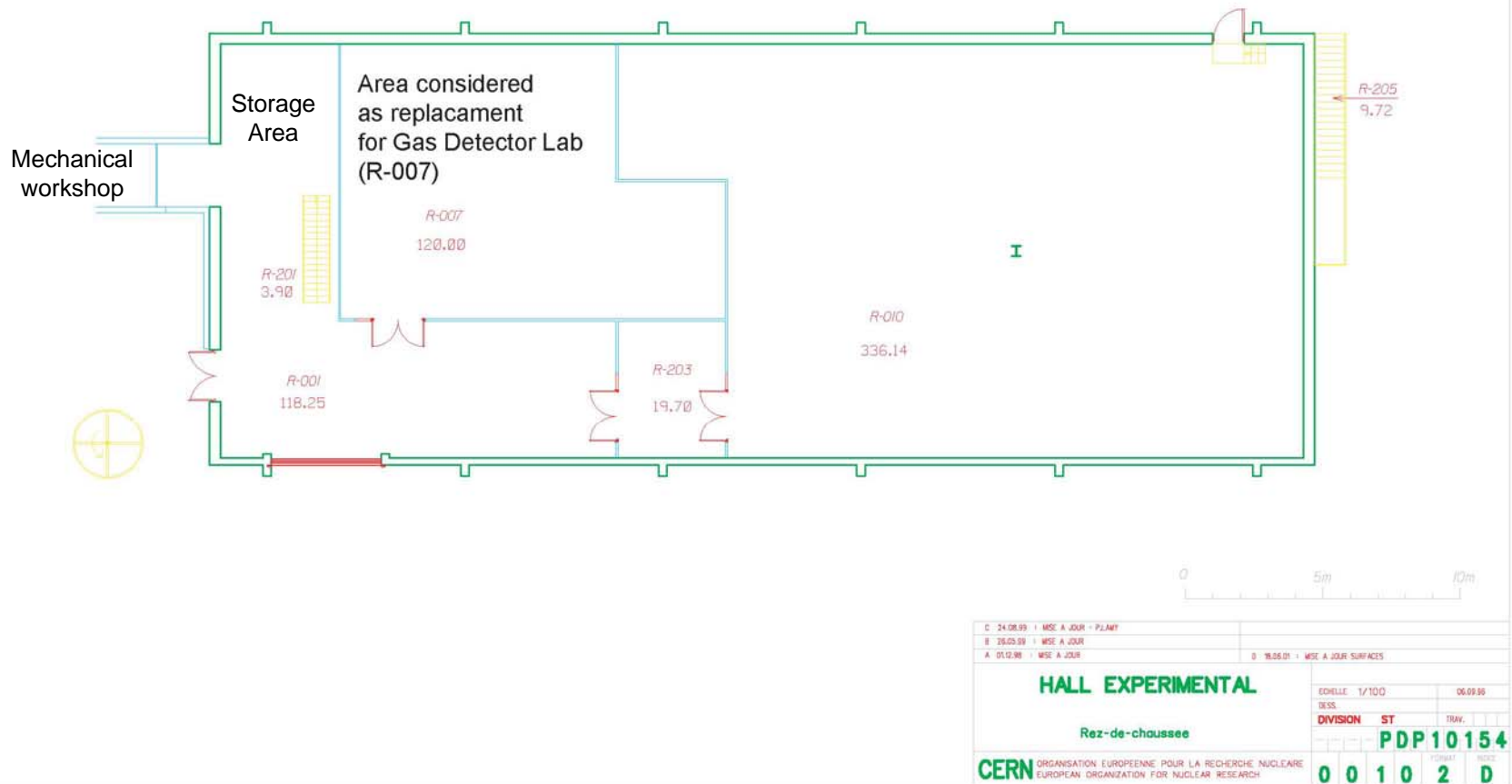


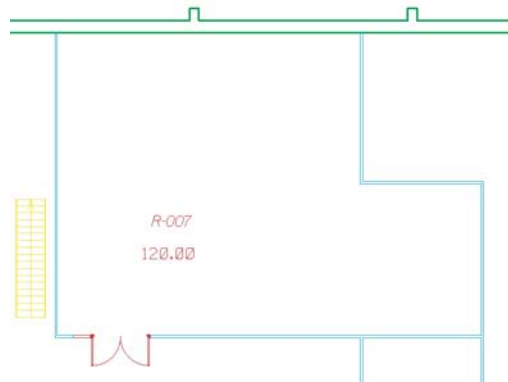
New Gas Detector Development Lab

Leszek Ropelewski PH-DT2-ST

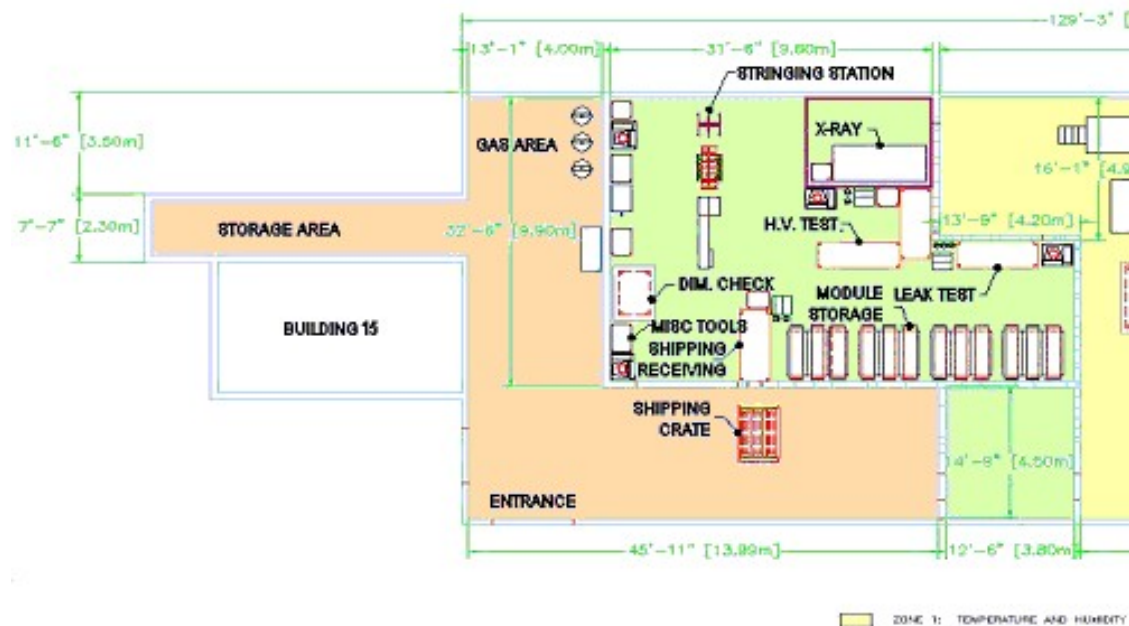
Building 154



Building 154 R-007



Building 154 R-007



Building 28 - Gas System



Gas Hut



Gas Hut Distribution



Distribution Panel
in the Lab



Exit Lines, Gas
Sensors, Ventilation



Gas Mixing Units



Gas Exit Lines



Ventilation



Safety System

Building 28 - Labs



Test Bench



X-Ray Shielding, Water Cooling



Grounding

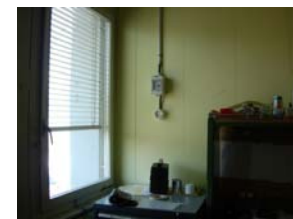


Air Conditioning

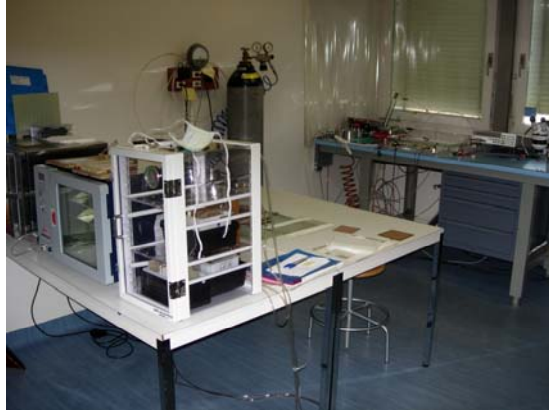
Safety
Switch



Power
Distribution



Building 28 - Clean Room



Building 28 - Support Infrastructure



Hazardous Materials Storage with Ventilation



Electronics Assembly and Test Area



Mechanical Workshop

New Gas Detector Development Lab

Systems:

Gas System

Irradiation (X-Rays Tubes) Systems

Electrical System

Air Circulation System

Water Cooling System

Computer network

Test Areas:

Flammable Gas Test Area

Non-flammable Gas Test Area

Large Detectors and Detector Systems Assembly and Test Area

Electronics Assembly and Test Area

Support Areas:

Clean Room

Mechanical Workshop

Hazardous Chemical Materials and Radioactive Sources Storage Area

Storage (mechanical, electronics, detector components, detectors)

Systems

Gas System:

- Gas Hut (with 7 gas lines - 3 for flammable gases) - 1 Nitrogen
- Gas Distribution Panels in the Lab
- Gas Line to Test Areas
- Exit Lines to the Roof
- Ventilation System from the Flammable Gas Area
- Gas Detection and Interlock System

X-Rays Tubes:

- Protection Shield Boxes
- Safety Interlocks

Electric System:

- Verification of Power Consumption
- Safety Switch
- Ground

Air Circulation System:

- Verification of T Stability - Power Consumption Balance

Areas

Flammable Gas Test Area:

Tent

Ventilation – Gas Evacuation System

Safe Electric Infrastructure

Clean Room:

Room Walls

Humidity and Temperature Control

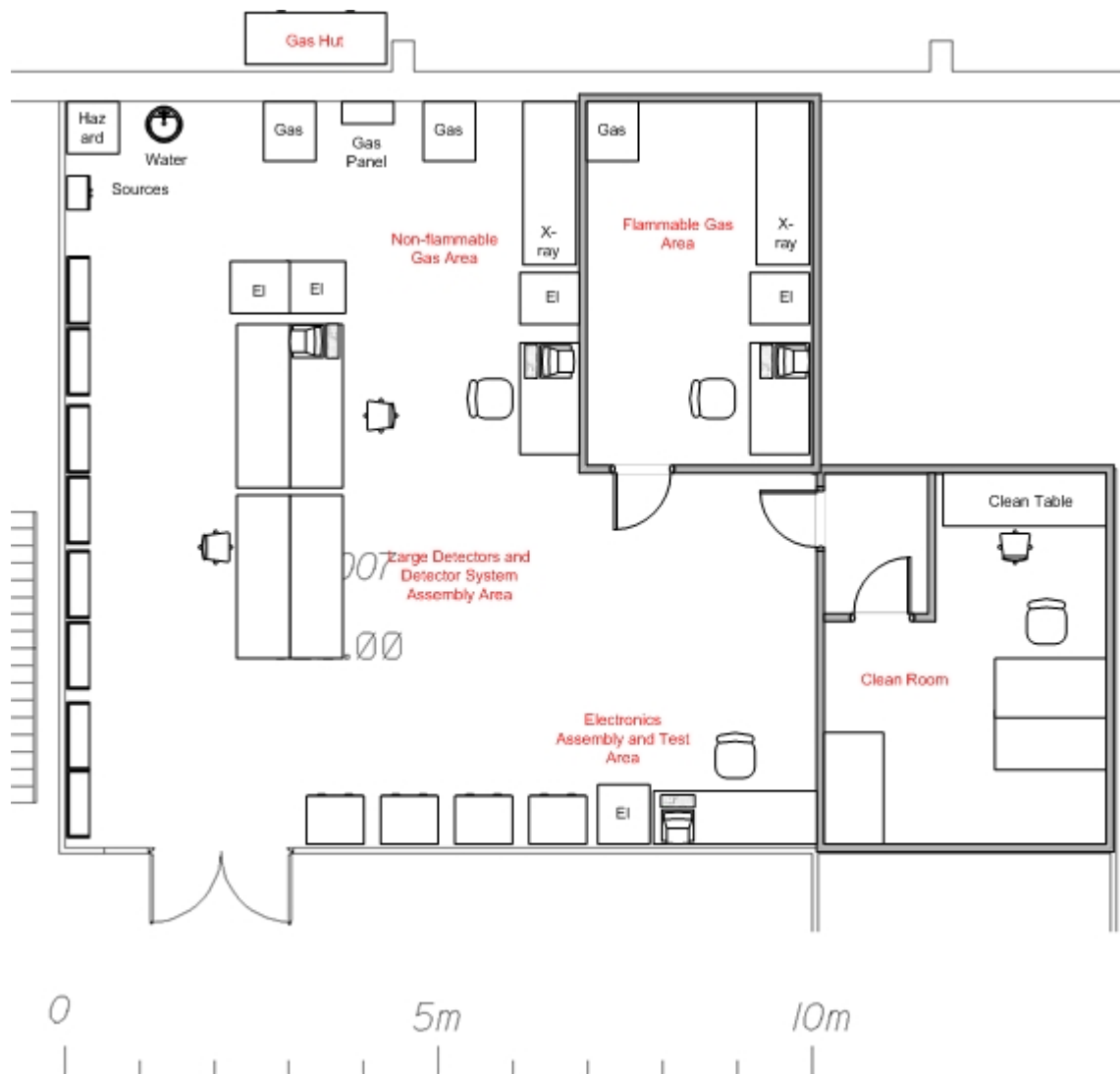
Nitrogen Supply

Hazardous Materials Storage:

Hut

Ventilation – Gas Evacuation System

Building 154 R-007



Gas Distribution System

